

BUILDING INTELLIGENCE WORLDWIDE.

Inside every building is the potential to reduce energy costs and become more profitable.

Walker Wireless helps building owners realize that potential with wireless control solutions that are easy to install, easy to use and easy to afford.



**WALKER WIRELESS
TECHNICAL SHEETS**

WALKERWIRELESS.CA

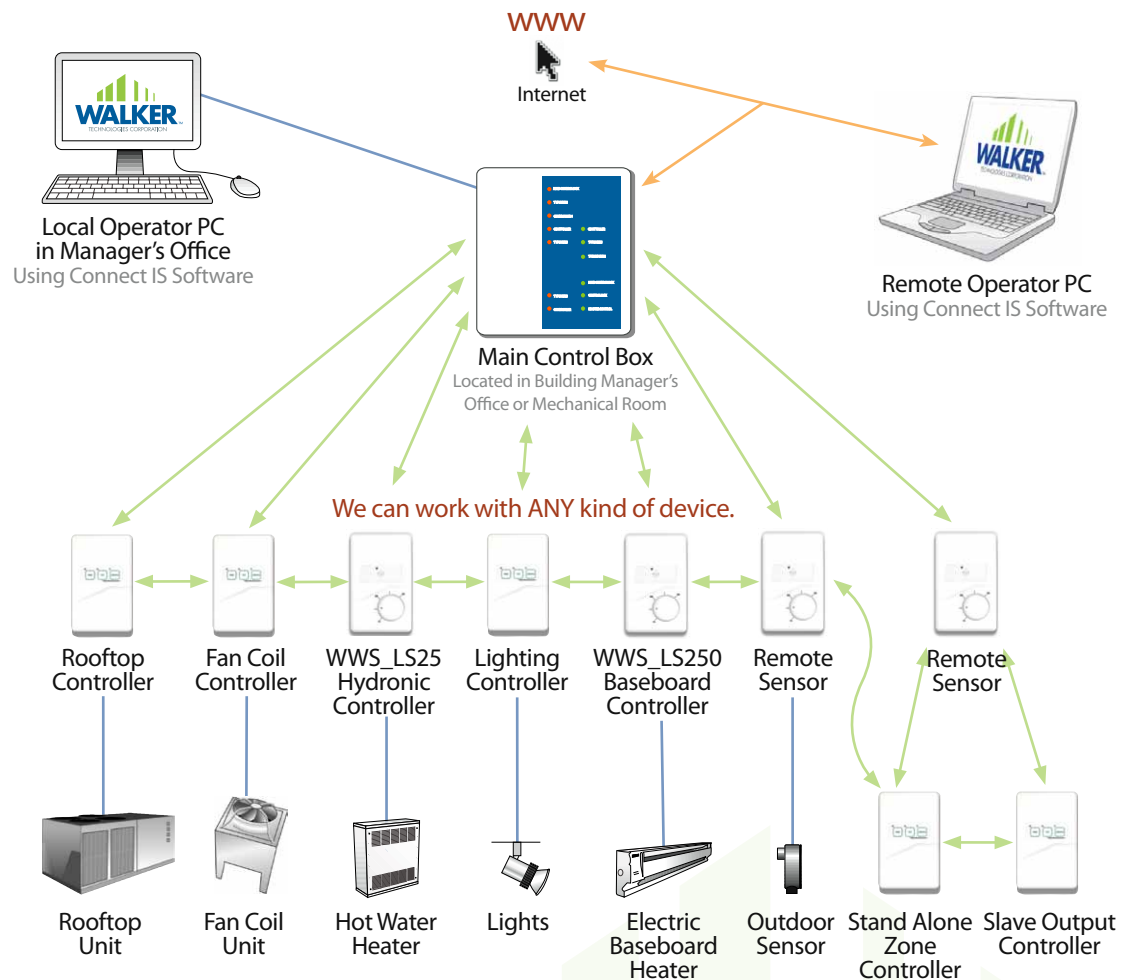

WALKER[™]
TECHNOLOGIES CORPORATION

SYSTEM LAYOUT

The Walker Wireless system is flexible enough to accommodate any application. A huge range of devices and their controllers, thermostats and sensors are linked wirelessly to the main control box. Located in the building manager's office or mechanical room, the main control box is hard-wired to a computer in the manager's office. However, the entire system can also be operated remotely via an Internet connection to any other computer or wireless device.

The Walker Wireless system is made up of:

- **Roomstat Individual suite thermostat and controller** - Operates standalone and receives set-point limit and other commands from its Group Controller.
- **Group Controller** - Handles supervisory logic for up to 100 Roomstats.
- **Head End Controller** - Handles more detailed trending and calculates several whole-building items such as outdoor temperature and total energy use.
- **Internet Bridge** - Connects the system to the Internet so it can be controlled, programmed and monitored remotely.



If you need further information or support, please talk to your Walker Wireless Representative at (250) 334-0447.

Walker Technologies Corporation
3001-B Moray Avenue
Courtenay, British Columbia
Canada V9N 7S7

Phone: (250) 334-0447
Fax: (250) 334-0467
Web: walkerwireless.ca
walkertechnologies.com

ZIGBEE MESH NETWORK

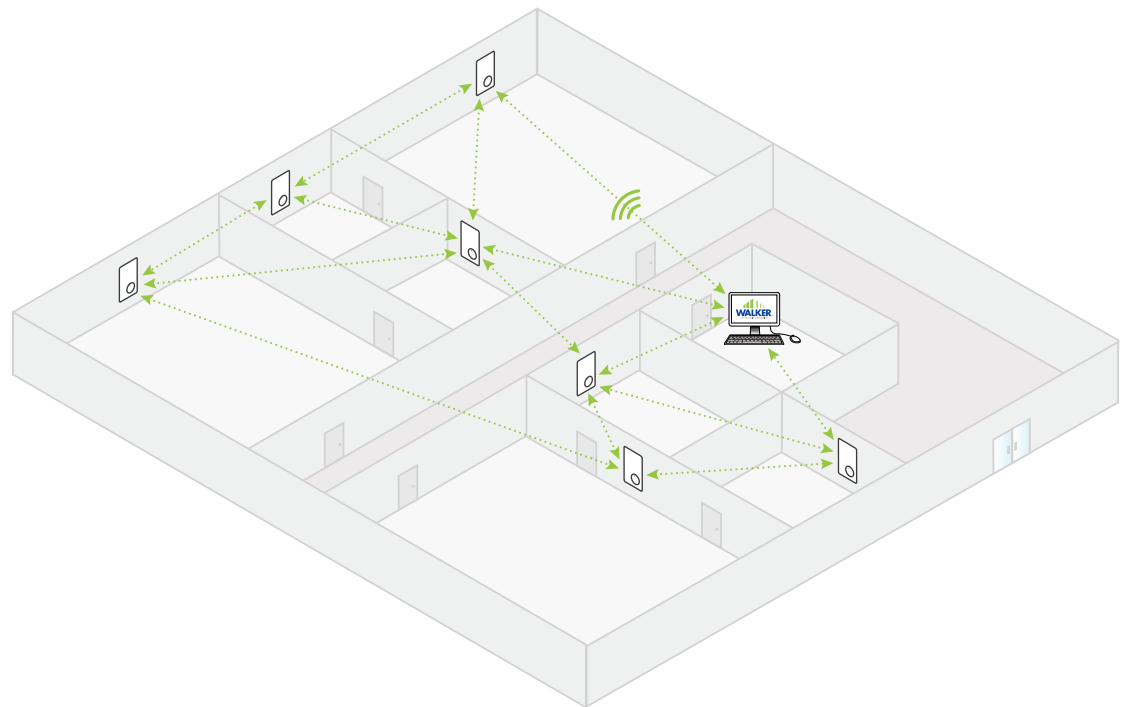
Walker Wireless operates the largest and most advanced ZigBee mesh network in the marketplace to ensure maximum reliability and potential for expansion.

Benefits

- Full RF redundancy with multiple data paths
- Self-configuring
- Self-healing
- Distributed intelligence

A mesh network allows data to automatically pass from node to node (devices such as thermostats, sensors, etc.) so the network can cover a large area.

If a device can no longer transmit its data through its current wireless (RF) pathway, the mesh network reroutes that data through an alternate pathway. And since each network is capable of handling hundreds of devices and our system is capable of running numerous mesh network simultaneously, the Walker Wireless solution can handle thousands of devices to accommodate growth.



Walker Technologies Corporation
3001-B Moray Avenue
Courtenay, British Columbia
Canada V9N 7S7

Phone: (250) 334-0447
Fax: (250) 334-0467
Web: walkerwireless.ca
walkertechnologies.com

If you need further information or support, please talk to your Walker Wireless Representative at (250) 334-0447.

CONNECT IMS, CONTROL INTERFACE MANAGEMENT SOFTWARE

Description

Connect IMS is a powerful internet capable software package that provides unsurpassed flexibility and control for setting up and managing a building control system. It provides a complete set of user-friendly control features and full graphic displays for total system access.

Using Connect IMS with internet connectivity, you can command and monitor buildings from anywhere in the world.

Connect IMS runs on all versions of the Windows operating system, and is compatible with every generation of Walker device.

Whether you are a building owner, manager, or an HVAC technician, Connect IMS provides you with all the tools you need to handle any building automation and control challenge.

Benefits

- Remote management of one or more facilities.

Features

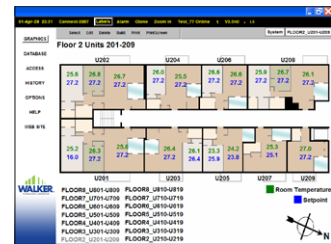
- Remote management of one or more facilities.
- Monitor and control building using either standalone, client/server, or web-based configurations.
- Create system access privileges based on user and/or location, with adjustable auto logout to protect unattended terminals.
- Design and manage flexible, scalable systems, from a single piece of equipment to a distributed multi-building campus.
- Customize displays to suit any requirements and easily modify existing graphics to change with your business or equipment.
- Automatically send trend data to Microsoft Excel for importing/exporting to and from standard office applications and reporting tools.
- Streamline energy management efforts in real-time with up-to-the-minute reporting.
- Detect and log tenant activity, generate billing information and limit demand throughout the system.
- A single product for system implementation, maintenance, and monitoring.



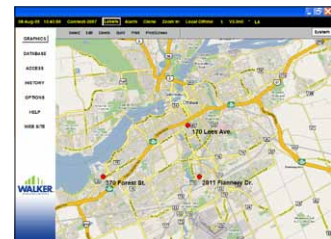
Individual Suite Layout Screen



Main Building Screen



Floor Overview Screen



Site Location Map Screen



Temperature Control Screen

If you need further information or support, please talk to your Walker Wireless Representative at (250) 334-0447.

Walker Technologies Corporation
3001-B Moray Avenue
Courtenay, British Columbia
Canada V9N 7S7

Phone: (250) 334-0447
Fax: (250) 334-0467
Web: walkerwireless.ca
walkertechnologies.com

WIRELESS BASEBOARD THERMOSTAT

The LVS 250 Wireless Baseboard Thermostat replaces the old mechanical baseboard thermostat without requiring installation of extra wires for communication or power. Using the ZigBee protocol, the LVS 250 provides wireless relay control of one zone of 120 or 240 VAC baseboard heaters. It connects to a central monitoring station to allow for monitoring and changing of parameters.



Benefits

- Wireless for simple, inexpensive, non-invasive installation.
- Built-in motion detector provides notification if no one is in the room, so heat can be reduced.
- Can limit maximum and minimum set-points.
- Reduces heating costs.

Input Characteristics

Operating Voltage	Max Current Draw	Frequency
120~240 VAC	200mA	50~60 Hz

Switching Characteristics

Switching Voltage	Max Switching Current	Frequency	Relay Min Off Time	Relay Min On Time
120~240 VAC	10A	50~60 Hz	2 minutes	2 minutes

Motion Detect

Type	Max Viewing Range	Max Viewing Angle
Infrared	5 m	135°

Temperature Characteristics

Sensing Range	Setpoint Range	Accuracy
-10°C~120°C	15°C~27°C	.5°C

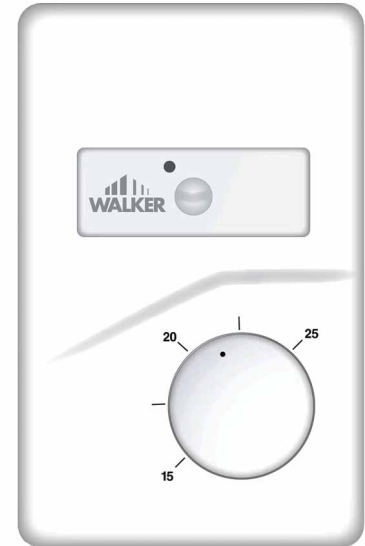
Communication Ports

Type	Connection	Baud Rate / Frequency	Max Distance
RS232	3 Pin	9.6 Kbps	15 m
ZigBee	Wireless	2.4 GHz	25 m

If you need further information or support, please talk to your Walker Wireless Representative at (250) 334-0447.

WIRELESS HYDRONIC BASEBOARD THERMOSTAT

The LVS 25 Wireless Hydronic Baseboard Thermostat replaces the old mechanical baseboard thermostat without requiring installation of extra wires for communication or power. Using the ZigBee protocol, the LVS 25 provides wireless control of one zone of hydronic baseboard heaters. It connects to a central monitoring station to allow for monitoring and changing of parameters.



Benefits

- Wireless for simple, inexpensive, non-invasive installation.
- Built-in motion detector provides notification if no one is in the room, so heat can be reduced.
- Can limit maximum and minimum set-points.
- Reduces heating costs.

Input Characteristics

Operating Voltage	Max Current Draw	Frequency
24 VAC	200mA	50~60 Hz

Switching Characteristics

Operating Voltage	Max Switching Current	Frequency
24 VAC	1A	50~60 Hz

Motion Detect

Type	Max Viewing Range	Max Viewing Angle
Infrared	5 m	135°

Temperature Characteristics

Sensing Range	Setpoint Range	Accuracy
-10°C~120°C	15°C~27°C	.5°C

Communication Ports

Type	Connection	Baud Rate / Frequency	Max Distance
RS232	3 Pin	9.6 Kbps	15 m
ZigBee	Wireless	2.4 GHz	25 m

Walker Technologies Corporation
3001-B Moray Avenue
Courtenay, British Columbia
Canada V9N 7S7

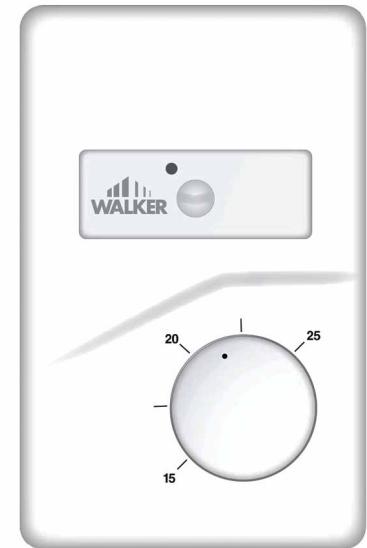
Phone: (250) 334-0447
Fax: (250) 334-0467
Web: walkerwireless.ca
walkertechnologies.com

If you need further information or support, please talk to your Walker Wireless Representative at (250) 334-0447.

WRT-B WIRELESS REMOTE THERMOSTAT (BATTERY BASED)

When a suite has cold rooms or areas within a room, a Wireless Remote Thermostat can be added in locations with no thermostat, so a more precise average zone temperature can be maintained.

Using ZigBee RF protocol the Wireless Remote Thermostat sends temperature, motion and setpoint data to a Walker central monitoring system. WRT-EH is designed to be mounted without wiring in any location that gives an average indication of the room temperature. The integral battery powers the device for up to 5 years. Extra sensors can be added where required.



Features

- Wireless, no need for expensive wiring.
- Low installation costs.
- No maintenance except for scheduled battery replacement.
- Uses ZigBee mesh network.
- Connects to a Walker central monitoring system.
- Remotely configurable to specific needs of zone being controlled.

Operation

- Turns down heat when room is not in use.
- Motion detector provides notification if space is unoccupied.
- Extra sensors can be added to average temperatures where required.
- Maximum and minimum set-points remotely adjusted.
- Will "power down" to a slower operational rate when battery energy is low.
- Reduces heating cost for building.
- Reports stored energy level.

Power Source

Voltage	Battery Life
4.5 VDC (3 X AA)	Up to 5 years (depending on duty cycle)

Motion Detection

Type	Range	Viewing Angle
Dual Infrared, differential motion	5 m	135 Deg.

Temperature Sensing

Sensing Range	Setpoint Range	Accuracy
-10 to 120 Deg.C	15 - 20 Deg.C	0.5 Deg.C

Communication Ports

Type	Connection	Baud Rate/ Frequency	Distance
RS232	3 pin	0.5 Deg.C	15m
ZigBee	Wireless	2.4 GHz	25m

If you need further information or support, please talk to your Walker Wireless Representative at (250) 334-0447.

WRT-EH WIRELESS REMOTE THERMOSTAT (ENERGY HARVESTING)

When a suite has cold rooms or areas within a room, a Wireless Remote Thermostat can be added in locations with no thermostat, so a more precise average zone temperature can be maintained.

Using ZigBee RF protocol, the Wireless Remote Thermostat sends temperature, motion and setpoint data to a Walker control system. The WRT-EH is designed to be mounted without wiring in any location that gives an average indication of the room temperature. The integral solar cell stores enough energy to power the sensor in any but the darkest applications. This solar cell is specifically manufactured for use under fluorescent lighting. Extra sensors can be added where required.

Features

- Wireless, no need for expensive wiring.
- Low installation costs.
- No maintenance.
- Uses ZigBee mesh network.
- Solar cell selected to use daylight or florescent lighting*
- Connects to a Walker central monitoring system.
- Remotely configurable to specific needs of zone being controlled.

Operation

- Turns down heat when room is not in use.
- Reduces heating cost for building.
- Motion detector provides notification if space is unoccupied.
- Extra sensors can be added to average temperatures where required.
- Maximum and minimum set-points remotely adjusted.
- Reports stored energy level.
- Will work in darkness for 12 hours with fully charged storage capacitor.
- Will "power down" to a slower operational rate when stored energy is low.
- Operational light level 50 to 1000 LUX

*Use battery based version WRT-B for low light or dark areas.



Walker Technologies Corporation
3001-B Moray Avenue
Courtenay, British Columbia
Canada V9N 7S7

Phone: (250) 334-0447
Fax: (250) 334-0467
Web: walkerwireless.ca
walkertechnologies.com

If you need further information or support, please talk to your Walker Wireless Representative at (250) 334-0447.

WRT-EH WIRELESS REMOTE THERMOSTAT (ENERGY HARVESTING)

[Under Development]

Power Source

Type	Lifetime
3 VDC Solar Cell plus SUPERCAP	Unlimited

Motion Detection

Type	Range	Viewing Angle
Dual Infrared, differential motion	5 m	135 Deg.

Temperature Sensing

Sensing Range	Setpoint Range	Accuracy
-10 to 120 Deg.C	15 - 20 Deg.C	0.5 Deg.C

Communication Ports

Type	Connection	Baud Rate/ Frequency	Distance
RS232	3 pin	0.5 Deg.C	15m
ZigBee	Wireless	2.4 GHz	25m

Light Charge and Transmission

- Time to charge internal capacitor under fluorescent lights.
- See table on next page for typical light levels.

LUX level	Initial charge time (normally charged at factory)	Refresh Charge time (after sensor drops out in dark area)	Recharge after single transmission
50	70 hours or 3V battery	20 hours	3 mins
200	45 hours or 3V battery	13 hours	2 mins

Dark Storage and operation

Number of transmission in dark area prior to drop-out	Recovery time at 50 LUX	Recovery time at 200 LUX
150	20 hours	13 hours

Note that recovery time is proportional

- If there are 4 transmissions /hour for 12 hours. then recovery time would be 48/150 or roughly 4 hours at 200 LUX

Walker Technologies Corporation
3001-B Moray Avenue
Courtenay, British Columbia
Canada V9N 7S7

Phone: (250) 334-0447
Fax: (250) 334-0467
Web: walkerwireless.ca
walkertechnologies.com

If you need further information or support, please talk to your Walker Wireless Representative at (250) 334-0447.

WIRELESS CONTROLLER 3X2

The Wireless Controller 3X2 uses radio frequency (RF) to control a building's environmental system, thereby enhancing energy efficiency. Using the ZigBee protocol, the Wireless Controller sends data to the central monitoring station and receives commands, which allows for remote control of fans, relays, rooftop HVAC units, etc. It also serves as a router between devices to allow for a larger communication range.



Benefits

- Wireless for simple, inexpensive, non-invasive installation.
- Option to connect by wire for areas beyond RF reception.

Input Characteristics (2 Universal Inputs)

Operating Voltage	Max Current Draw	Frequency
24 VAC	200mA	50~60 Hz

Output Characteristics

Output	Max Switching/Load Current	Voltage
3 Digital Relay Outputs	1A	24 VAC/30 VDC
2 Universal Outputs	20mA	0~10 VDC

Temperature Characteristics

Sensing Range	Accuracy
-10°C~120°C	.5°C

Communication Ports

Type	Connection	Baud Rate / Frequency	Max Distance
RS232	3 Pin	9.6 Kbps	15 m
ZigBee	Wireless	2.4 GHz	25 m
IOBus	2 Pin Terminal Strip	9.6 Kbps	1000 m

Walker Technologies Corporation
3001-B Moray Avenue
Courtenay, British Columbia
Canada V9N 7S7

Phone: (250) 334-0447
Fax: (250) 334-0467
Web: walkerwireless.ca
walkertechnologies.com

If you need further information or support, please talk to your Walker Wireless Representative at (250) 334-0447.

Easy-PTAC, WIRELESS PTAC CONTROL UNIT

The EASY-PTAC is designed to control Packaged Terminal Air Conditioner (PTAC) units and connect wirelessly to the rest of the Walker product line.

The EASY-PTAC replaces the connected thermostat or if one is not connected the EASY-PTAC can be mounted on the unit and a wireless battery operated thermostat can be mounted in the room in an efficient location for control (e.g. beside a door).

Using a motion detector and Walker's Temperature Predictor the PTAC unit is controlled to give the room a stable and comfortable temperature while at the same time reducing energy used by the unit.



Features

- Wireless communication to the control system, no need for expensive wiring
- Uses the ZigBee mesh network to cover large areas
- 2 line display with indicator icons
- Limit maximum and minimum setpoints for more efficient energy control
- Create custom schedules for further energy reduction
- Connects to a central monitoring station
- Motion detector provides notifications if no one is in the room in order to automatically reduce energy use.
- 2 inputs for additional energy management control (e.g. window switch)

Benefits

- Reduces heating/cooling costs
- Turns heat/cooling to a minimum when room is unoccupied
- Reduced installation cost and time
- Connect to a central monitoring station to allow viewing and changing of parameters

Walker Technologies Corporation
3001-B Moray Avenue
Courtenay, British Columbia
Canada V9N 7S7

Phone: (250) 334-0447
Fax: (250) 334-0467
Web: walkerwireless.ca
walkertechnologies.com

If you need further information or support, please talk to your Walker Wireless Representative at (250) 334-0447.

Easy-PTAC, WIRELESS PTAC CONTROL UNIT

Operating Characteristics

Operating Voltage	Max Current Draw	Frequency
24 VAC	200mA	50~60 Hz

Operating Temperature	Humidity Range
0°C~50°C	0%~95% rh non-condensing

Temperature Characteristics

Sensing Range	Accuracy
-10°C~120°C	.5°C

Output Characteristics

Outputs	Current	Voltage
Heating (W)	1A	24VAC/30VDC
Cooling (Y)	1A	24VAC/30VDC
Fan Low (G1)	1A	24VAC/30VDC
Fan High (G2)	1A	24VAC/30VDC

Input Characteristics

Inputs	Voltage input	Current draw
IP2	0-5VDC/Contact closure	10mA
IP3	0-5VDC/Contact closure	10mA

Communication Ports

Type	Connection	Baud Rate / Frequency	Max Distance
RS232	3 Pin	9.6 Kbps	15 m
ZigBee	Wireless	2.4 GHz	25 m

Walker Technologies Corporation
3001-B Moray Avenue
Courtenay, British Columbia
Canada V9N 7S7

Phone: (250) 334-0447
Fax: (250) 334-0467
Web: walkerwireless.ca
walkertechnologies.com

If you need further information or support, please talk to your Walker Wireless Representative at (250) 334-0447.

Easy-RTU, WIRELESS ROOFTOP CONTROL UNIT

The EASY-RTU is designed to control Heating/Cooling rooftop units and connect wirelessly to the rest of the Walker product line.

The EASY-RTU replaces the connected thermostat and can incorporate wireless battery operated thermostats for accurate control of larger rooms by averaging temperatures.

Using a motion detector and Walker's Temperature Predictor the Rooftop unit is controlled to give the room(s) a stable and comfortable temperature while at the same time reducing energy used by the unit.



Features

- Wireless communication to the control system, no need for expensive wiring
- Uses the ZigBee mesh network to cover large areas
- Limit maximum and minimum setpoints for more efficient energy control
- Create custom schedules for further energy reduction
- Connects to a central monitoring station
- Motion detector provides notifications if no one is in the room in order to automatically reduce energy use.
- 2 inputs for additional energy management control (e.g. window switch)

Benefits

- Reduces heating/cooling costs
- Turns heat/cooling to a minimum when room is unoccupied
- Reduced installation cost and time
- Connect to a central monitoring station to allow viewing and changing of parameters

Walker Technologies Corporation
3001-B Moray Avenue
Courtenay, British Columbia
Canada V9N 7S7

Phone: (250) 334-0447
Fax: (250) 334-0467
Web: walkerwireless.ca
walkertechnologies.com

If you need further information or support, please talk to your Walker Wireless Representative at (250) 334-0447.



Technical Data Sheet

Easy-RTU, WIRELESS ROOFTOP CONTROL UNIT

Operating Characteristics

Operating Voltage	Max Current Draw	Frequency
24 VAC	200mA	50~60 Hz

Operating Temperature	Humidity Range
0°C~50°C	0%~95% rh non-condensing

Temperature Characteristics

Sensing Range	Accuracy
-10°C~120°C	.5°C

Output Characteristics

Outputs	Current	Voltage
8 Relay Contacts	1A	24VAC/30VDC
2 Analog	20mA	0~10VDC

Input Characteristics

Inputs	Voltage input	Current draw
4 Inputs	0-5VDC/Contact closure	10mA

Communication Ports

Type	Connection	Baud Rate / Frequency	Max Distance
RS232	3 Pin	9.6 Kbps	15 m
ZigBee	Wireless	2.4 GHz	25 m

Walker Technologies Corporation
3001-B Moray Avenue
Courtenay, British Columbia
Canada V9N 7S7

Phone: (250) 334-0447
Fax: (250) 334-0467
Web: walkerwireless.ca
walkertechnologies.com

If you need further information or support, please talk to your Walker Wireless Representative at (250) 334-0447.

Zcoord, Wireless Coordinator

The Zcoord is the link between the Walker wired system and Walker Wireless system. It forms the network as devices are added and sets the communication channel and Operational PAN ID.

Currently the Walker Wireless System can have 20 devices (Address 3-22) per MicroSAC31-Wireless/Zcoord pair and up to 300 devices per network. If more devices are needed 2 or more networks can be made with each network having 300 devices each. Data will not be transmitted wirelessly between networks. Data transferred between networks must be done by Walker Smart-LAN Highway.



Input Characteristics (2 Universal Inputs)

Operating Voltage	Max Current Draw	Frequency
24 VAC	200mA	50~60 Hz

Output Characteristics

Output	Max Switching/Load Current	Voltage
3 Digital Relay Outputs	1A	24 VAC/30 VDC
2 Universal Outputs	20mA	0~10 VDC

Temperature Characteristics

Sensing Range	Accuracy
-10°C~120°C	.5°C

Communication Ports

Type	Connection	Baud Rate / Frequency	Max Distance
RS232	3 Pin	9.6 Kbps	15 m
ZigBee	Wireless	2.4 GHz	25 m
IOPbus	2 Pin Terminal Strip	9.6 Kbps	1000 m

Walker Technologies Corporation
3001-B Moray Avenue
Courtenay, British Columbia
Canada V9N 7S7

Phone: (250) 334-0447
Fax: (250) 334-0467
Web: walkerwireless.ca
walkertechnologies.com

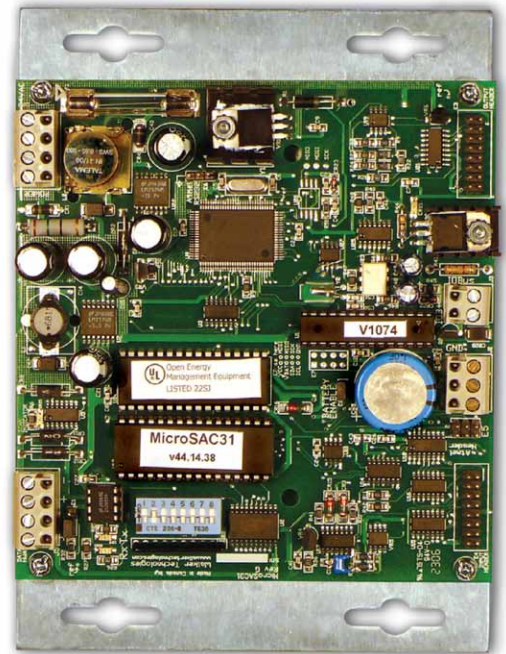
If you need further information or support, please talk to your Walker Wireless Representative at (250) 334-0447.

MicroSAC 31-Wireless, Stand Alone Controller

This is the heart of the Walker Wireless control system. When paired with a Zcoord, the MicroSAC 31-Wireless acts as an interface between the head-end control system and the wireless thermostats. It executes the system's control programs and displays information for the control interface software.

Benefits

- Trends information in the system for analysis.
- Notifies of control system problem alarms.
- 48 hour backup for date and time in case of power loss.



Input Characteristics

Operating Voltage	Max Current Draw	Frequency
24 VAC	100mA	50~60 Hz

Communication Ports

Type	Connection	Baud Rate / Frequency	Max Distance
RS232	3 Pin Terminal Strip	9.6 Kbps	15 m
SmatLAN Highway	4 Pin Terminal Strip	38.4 Kbps	1000 m
IOBus	2 Pin Terminal Strip	9.6 Kbps	1000 m

Walker Technologies Corporation
3001-B Moray Avenue
Courtenay, British Columbia
Canada V9N 7S7

Phone: (250) 334-0447
Fax: (250) 334-0467
Web: walkerwireless.ca
walkertechnologies.com

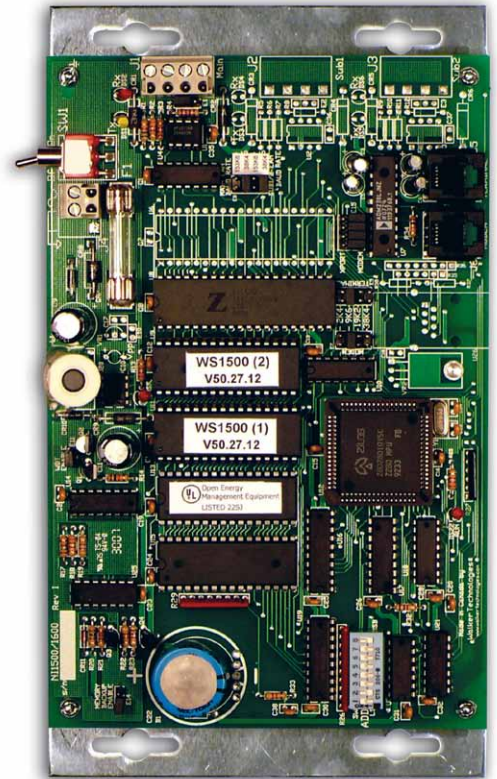
If you need further information or support, please talk to your Walker Wireless Representative at (250) 334-0447.

WS1500, NETWORK INTERFACE CONTROLLER

The Network Interface Controller is the gateway to the Walker Wireless control system, acting as the interface between the computer and the control system. It executes the system's control programs and displays information for the control interface software.

Benefits

- Trends information in the system for analysis.
- Notifies of control system problem alarms.
- 48 hour backup for date and time in case of power loss.



Input Characteristics

Operating Voltage	Max Current Draw	Frequency
24 VAC	100mA	50~60 Hz

Communication Ports

Type	Connection	Baud Rate / Frequency	Max Distance
RS232	RJ12	9.6 Kbps	15 m
SmatLAN Highway	4 Pin Terminal Strip	38.4 Kbps	1000 m

Walker Technologies Corporation
3001-B Moray Avenue
Courtenay, British Columbia
Canada V9N 7S7

Phone: (250) 334-0447
Fax: (250) 334-0467
Web: walkerwireless.ca
walkertechnologies.com

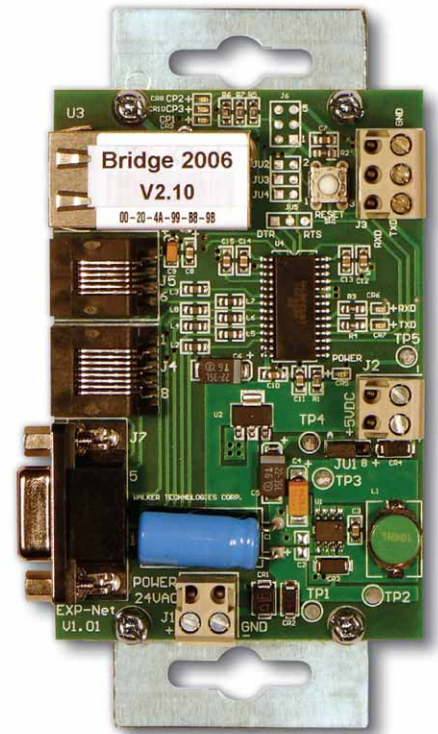
If you need further information or support, please talk to your Walker Wireless Representative at (250) 334-0447.

BRIDGE 2006, INTERNET BRIDGE

The Bridge 2006 allows the Walker Wireless system to be connected to the Internet for remote or local monitoring, control and programming.

Benefits

- Allows access to the Walker Wireless control system from any Internet connection in the world.
- Ability to email system warning alarms.
- Allows multiple users to connect to the system at the same time.



Input Characteristics

Operating Voltage	Max Current Draw	Frequency
24 VAC	100mA	50~60 Hz

Communication Ports

Type	Connection	Baud Rate / Frequency	Max Distance
RS232	3 Pin Terminal Header	9.6 Kbps	15 m
RS232	RJ12	9.6 Kbps	15 m
RS232	RJ45	9.6 Kbps	15 m
TCP/IP	RJ45	10 Mbps	N/A

Walker Technologies Corporation
3001-B Moray Avenue
Courtenay, British Columbia
Canada V9N 7S7

Phone: (250) 334-0447
Fax: (250) 334-0467
Web: walkerwireless.ca
walkertechnologies.com

If you need further information or support, please talk to your Walker Wireless Representative at (250) 334-0447.

A HISTORY OF PROVEN WIRELESS CONTROL SOLUTIONS.

The Walker Wireless concept of simple, wireless control of energy use in residential suites was originated in 1985. Recognizing how expensive and inefficient existing systems were, Al Walker drew on his background in physics and microprocessor technology to develop a cost-effective wireless solution for controlling building comfort and costs. Today, Al's unique HVAC controls have been installed in thousands of buildings across Canada, including the highly sensitive Winnipeg level 4 Virology Lab.

Request a FREE Wireless Assessment.

To demonstrate all the benefits and savings of a Walker Wireless solution, we offer a no-charge, no-obligation Wireless Assessment. Simply visit walkerwireless.ca, click on "Request a FREE Wireless Assessment", and a Walker Wireless Representative will contact you. If you'd like to get started even faster, simply call us at (250) 334-0447.

If you need further information about our products and services, or have a question about pricing, ordering, technical support or installation, contact us today.



WALKER TECHNOLOGIES CORPORATION
3001-B Moray Avenue
Courtenay, British Columbia
Canada V9N 7S7

Phone: (250) 334-0447
Fax: (250) 334-0467
Web: www.walkerwireless.ca
www.walkersys.com