



## *Internet connected*

### FEATURES

- Based on the MicroSAC 21 product line.
- Real time clock with 48 hour backup.
- Expandable to 24 Inputs and 24 Outputs
- Plug-in daughterboards for OEM applications.
- Separate serial ports for terminal, I/O BUS operations and diagnostics.
- Separate CPU for I/O and communications greatly enhances processing speed.
- On board I/O BUS power allows up to 22 I/O BUS modules to be directly connected.
- Optional BACnet support.
- Can be installed as a stand-alone system with the ability to add on a distributed system in the future.
- Snap track mountable.

### INPUT/OUTPUT

- The basic MicroSAC 31 board comes with no I/O to allow for cost effective expansion.
- Ten bit A/D conversion on inputs and outputs.
- Single robust hardware expansion technology allows up to 24 hardware inputs and 24 hardware outputs on any single controller.
- Expansion cables can be up to 2 feet in length.
- Expansion boards are low cost and will be plug compatible to future core board upgrades.
- Expansion boards:
 

EXP-IP8	8 Universal inputs
EXP-DO8	8 Triac outputs (24Vac)
EXP-OP8	8 Universal outputs (0-10Vdc)
- EXPD series (daughterboards) mount on top of the MicroSAC 31 to reduce wiring costs and provide compact packages for specialty or OEM applications. EXP boards cannot be used when an EXPD board is in use.
- Daughterboards:
 

EXPD-IP8DO8	8 universal inputs	8 Triac outputs	
EXPD-IP8OP4	8 universal inputs	4 universal outputs	
EXPD-IP8OP4DO4	8 universal inputs	4 universal outputs	4 Triac outputs

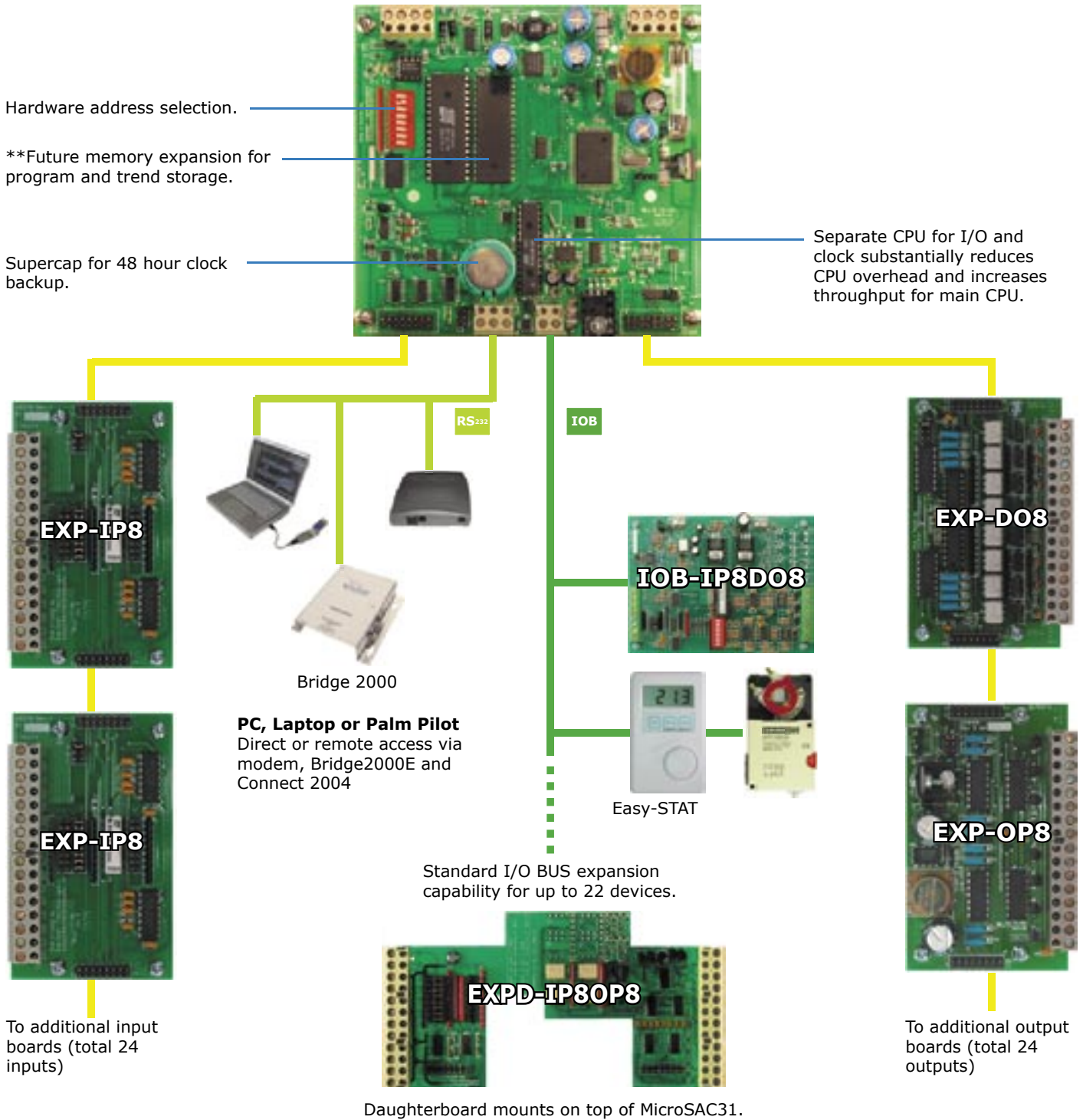
### DESCRIPTION

MicroSAC 31 is Walker's latest entry into the HVAC controller marketplace and begins the evolution of the Walker controller product line to a single form factor.

Based on the successful MicroSAC 21 product line, MicroSAC 31 adds a second microprocessor, expandable I/O, and on board I/O BUS power to greatly enhance and expand performance. MicroSAC 31 is a competitive addition to current applications, as well as a low cost solution for many OEM applications.

### BACKWARDS COMPATIBLE

MicroSAC 31 is identical in programming to all previous Walker products and is completely backward compatible with the existing installed base.



\*\* Planned additions, contact Walker Technologies for details

